



Primbee Public School

43 Illowra Cres, Primbee, NSW 2502
T 4274 1974 F 4276 2837
E: primbee-p.school@det.nsw.edu.au
Relieving Principal: Sharon Rigg



Live Life Well

Respect

Responsibility

Compassion

Personal Best

WHAT'S ON.....WHEN?

Term 1 – 2019

Thursday 21 Feb	K-2 Assembly
Friday 22 Feb	District Swimming Carnival
Tuesday 26 Feb	PBL BBQ – 8.15am to 8.55am
Wednesday 27 Feb	P & C Meeting 6pm
Friday 1 March	Uniform Shop open 2.30-3pm
5 & 6 March	Dental Visit 10am-3pm
Thursday 7 March	K-2 Assembly
8 & 11 March	Life Education Visit
Thursday 14 March	3-6 Assembly
Friday 15 March	National Day of Action Against Bullying & Violence
	Uniform Shop open 2.30-3pm
Wednesday 20 March	SRC attending LIHS
	Annual General Meeting 6pm
	P&C Meeting 7pm
Thursday 21 March	K-2 Assembly
Saturday 23 March	State Elections 7am-6pm (Library)
Thursday 28 March	3-6 Assembly
	StEPS vision screening for Kindergarten
Friday 29 March	Uniform Shop open 2.30-3pm
Monday 1 April	Vegetable Week
Thursday 4 April	K-2 Assembly
	The Big Vege Crunch 10am-12pm
Thursday 11 April	ANZAC Ceremony
Friday 12 April	Easter Hat Parade
	Big W Voucher Draw
	Uniform Shop open 2.30-3pm



One of the other highlights of my week was to meet with 6 students who have been selected by their classroom teacher to be our first group of “Blue Buzzies” for the year. We shared some Lemonade and Milky Ways (blue foods) and we talked about the native Blue Banded Bees, a solitary bee who likes blue flowers and blue objects. We discussed their very important role in the playground and we agreed to help other students by promoting our school values of safety, respect and active learning.

Last week we launched into our first Positive Behaviour for Learning lessons and the focus for the fortnight is “hands and feet to ourselves”. Students are receiving buzzies in the playground to reward their positive behaviours. The students enjoy collecting the buzzies and placing them into their classroom box. The boxes will be taken to assembly beginning in Week 5 to be collected in our bee hive. We look forward to our hive filling up to work towards some whole school rewards.

Next week our covered outdoor learning area will be getting some new downpipes and guttering. The students may have to place their bags outside classrooms on bench seats for the week while the work is being carried out.

Have a great week everyone.

Mrs Sharon Rigg
Principal

PRINCIPAL'S MESSAGE 2019

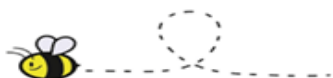
Welcome to Week 4 – Term 1

There have been so many highlights over the last 2 weeks. Last Thursday we inducted our School Captains for 2019. Our School Captains are Isaac Grillis and Olivia Mahlborg and our Vice Captains are Igor Basarak and Melody Shelton. They have already been working hard to support students and teachers. This week Olivia and Isaac have been speaking over our public address system to remind their friends about the PBL focus. I am so impressed with their enthusiasm and commitment.

DISTRICT SWIMMING CARNIVAL

Good luck to our competitors attending the district carnival. I am sure they will represent our school well and show great sportsmanship. The carnival is being held on Friday, 22 February at 8.15am at Warilla Pool.

A reminder that parents/carers need to transport their child to and from the pool and they must have their name marked off on arrival and departure.



Kind Regards
Melissa Yates

CLASSROOM BOOK PACKS

Update – Families are now welcome to make a deposit of \$5.00 on-line or at the office towards their child's Book Pack.

2019 packs are \$35 for Years 1 – 6 and will be distributed to the classroom teacher once payment has been received at the office with 50% discount for the 3rd child and free for the 4th child.

The packs are great value and worth far more than this amount as the school is subsidising the extra cost to make the packs more affordable for families.

One lucky student will also win a \$50 Big W voucher if they have paid for their pack by Thursday, 11 April. The draw will be taking place at the Easter Hat Parade.

2019 SCHOOL LEADERS



Our proud School Leader's for 2019
Igor, Melody, Olivia, Isaac

COMULSORY SCHOOL ATTENDANCE – INFORMATION FOR PARENTS

Please follow the link or see the attached recommendation from the NSW Department of Education and Communities

https://education.nsw.gov.au/student-wellbeing/media/documents/attendance-behaviour-engagement/attendance/attendance_parents.pdf

POSITIVE BEHAVIOUR FOR LEARNING



Hi, I am the PBL reward token and I look forward to buzzing around the playground looking for students who are focusing on the schools Positive Behaviour values.

Here are my first group of "blue buzzies" that will be helping me.



LIBRARY NEWS

It's been wonderful to see so many students eager to borrow books from the library. Mrs Kelly is running a competition to see which class has the most amount of students borrowing books. A prize will be given out to the winning class at the end of the term. Just a reminder that students need a library bag to be able to borrow a book.

Happy reading everyone!



NRL DRAGON'S VISIT

We were very lucky to have a representative from the NRL visit the school and share with Years 3-6 the importance of being cyber safe. A couple of our students had fun dressing as "Dragon's Supporters".



PROFESSIONAL LEARNING

Professional Learning		
20/2	Sharon Rigg	Principals Induction Conference
21/2	Sharon Rigg	Principals Induction Conference
22/2	Sharon Rigg	Principals Induction Conference

DENTAL CLINIC

Primbee Public School students will have access to a mobile dental clinic on the 5th and 6th of March. It is free for most students and provides students with a check-up, clean and dental hygiene education. The consent forms need to be returned to the office by Thursday 28th of February.



LIFE EDUCATION VISIT



All students at Primbee Public School have the wonderful opportunity to engage in the Life Education program. The Primary school modules are highly engaging and age appropriate to inform students about drug and health education.

The program addresses many of the components and objectives within the NSW PDHPE curriculum including: Healthy Food Choices, Importance of physical activity, Safety, Healthy Bodies and lifestyles, Medicines/Drugs, Friendship and Expressing Emotions. The modules help children to develop relationship skills, positive communication, to be able to problem solve and build their decision making skills.

Parents are invited and welcome to come along to a parent information session on **Friday 8th March at 9am** to gain some information on what is being taught and insight to the topics covered by Life Education.

Please remember to bring in your permission notes back to school.

We hope your children are looking forward to this fantastic program :)

Mrs Berehowyj
Life Education Coordinator

WOLLONGONG HIGH SCHOOL OF THE PERFORMING ARTS – 2020 YEAR 7 AUDITIONS OPEN

The audition application for entry into Wollongong High School of the Performing Arts is now available online only, on the WHSPA website.

Auditions will be held from Monday 25th March to Friday 12th April, the last 3 weeks of Term 1.

<https://www.millenniumschoools.net.au/whspa/?id=8213>



HIGH SCHOOL EXPRESSION OF INTEREST FORMS

Students in Year 6 will be receiving their High School expression of interest forms within the next week. Once they have been completed, forms can be returned to the office. If you have any questions about the process, please come and see Mrs Hodges.

HEALTH & SAFETY – VOLUNTEERS IN SCHOOLS

The majority of our volunteers at Primbee Public School are parents of a child attending the school. Most parent volunteers coming into the school are exempt from obtaining a WWCC clearance which is the vast majority of our parents. However, schools do require volunteers to complete the Appendix - 'Declaration for volunteers and non-child related contractors' form and they must also provide the school with 100 points of current ID.

They need to complete the required paperwork and identification document check, which can be done by supplying some of the following documentation:-
Category 1 (70 points) Birth Certificate or Passport.

Category 2 (Initial document 40 points) – (any additional documents will be awarded 25 points)
Current Licence or Permit (Government Issued)
Centrelink Pension/Concession or Health Care Card.

Category 3 (25 points each) Medicare Card/Private Health Care Card, Council Rates Notice, Credit/Debit Card, Utility Bills.

See Staff for more options.

Please note: - All volunteers must sign on at the office and obtain an authorised 'Primbee Public School Visitor's Badge' and return the visitors badge when they sign off.

Please help us to comply with the current Dept. of Education Volunteer policies by completing or updating these procedures with our administration staff.

If you are a parent who is transporting children other than your own, to or from any school events, the school needs a copy of your licence, car registration papers and insurance papers along with the above requirements.

Please be patient and understanding as we work with you to keep our students safe.



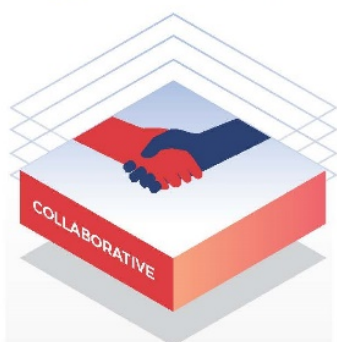
TERM 1 - 2019 PLANNER

Week	Monday	Tuesday	Wednesday	Thursday	Friday
Term 1 - 2019					
1	28/1 Australia Day Public Holiday	29/1 Staff Return	30/1 Students Return Best Start Assessments	31/1 Best Start Assessments	1/2 Best Start Assessments
2	4/2 Kindergarten Start	5/2 School Swimming Carnival	6/2	7/2	8/2
3	11/2 Parent Teacher Information Meeting 4/5Y & 5/6C – 3.10pm	12/2 Parent Teacher Information Meeting 1C – 2.30-3pm 1/2B – 8.20am	13/2 Parent Teacher Information Meeting KB – 2.30-3pm Lake Illawarra High School EXPO Evening Dragons Assembly 11.30am – 12pm	14/2 Parent Teacher Information Meeting 2/3D – 3.10pm 3-6 Assembly 2pm	15/2 Uniform Shop open 2.30 – 3pm
4	18/2	19/2	20/2	21/2 K-2 Assembly 2pm	22/2 District Swimming Carnival
5	25/2	26/2	27/2 P&C Meeting 6pm	28/2 3-6 Assembly 2pm	1/3 Uniform Shop Open 2.30 – 3pm
6	4/3	5/3 Dental Visit 10am – 3pm	6/3 Dental Visit 10am – 3pm	7/3 K-2 Assembly 2pm	8/3 Life Education visit
7	11/3 Life Education Visit	12/3	13/3	14/3 3-6 Assembly 2pm	15/3 National Day of Action Against Bullying & Violence Uniform Shop 2.30-3pm
8	18/3	19/3	20/3 SRC Lake Illawarra High School visit AGM 6pm P&C 7pm	21/3 K-2 Assembly 2pm	22/3
9	25/3	26/3	27/3	28/3 3-6 Assembly 2pm StEPS vision screening for Kindergarten	29/3 Uniform Shop 2.30-3pm
10	1/4 Vegetable Week	2/4	3/4	4/4 K-2 Assembly 2pm The Big Vege Crunch 10am – 12pm	5/5
11	8/4	9/4	10/4	11/4 ANZAC Ceremony	12/4 Easter Hat Parade Big W Voucher Draw Uniform Shop 2.30-3pm



School Community Charter

 **Collaborative. Respectful. Communication.**



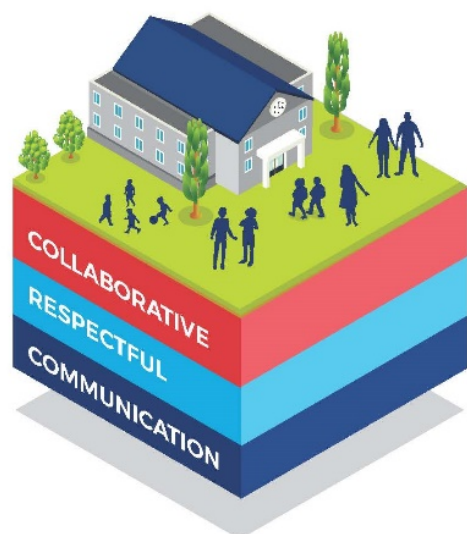
We work in partnership to promote student learning.



We treat each other with respect and fairness.



We communicate in a positive and constructive manner.



Respectful communication is a right

In all workplaces people have the right to feel safe and respected. Unacceptable and offensive behaviour has no place in our school communities.

Unacceptable behaviour:

- Aggressive or intimidating actions, such as violence, threatening gestures or physical proximity.
- Aggressive or intimidating language, including the use of obscenities, making sexist, racist or derogatory comments or using a rude tone.
- Treating members of the school community differently due to aspects such as their religion or disability.
- Inappropriate and time wasting communication.

We all play a part



School Community Charter

education.nsw.gov.au



Compulsory School Attendance

Information for parents

Education for your child is important and regular attendance at school is essential for your child to achieve their educational best and increase their career and life options. NSW public schools work in partnership with parents to encourage and support regular attendance of children and young people. When your child attends school every day, learning becomes easier and your child will build and maintain friendships with other children.

What are my legal responsibilities?

Education in New South Wales is compulsory for all children between the ages of six years and below the minimum school leaving age. The *Education Act 1990* requires that parents ensure their children of compulsory school age are enrolled at, and regularly attend school, or, are registered with the Board of Studies, Teaching and Educational Standards for homeschooling.

Once enrolled, children are required to attend school each day it is open for students.

The importance of arriving on time

Arriving at school and class on time:

- Ensures that students do not miss out on important learning activities scheduled early in the day
- Helps students learn the importance of punctuality and routine
- Give students time to greet their friends before class
- Reduces classroom disruption

Lateness is recorded as a partial absence and must be explained by parents.

What if my child has to be away from school?

On occasion, your child may need to be absent from school. Justified reasons for student absences may include:

- being sick, or having an infectious disease
- having an unavoidable medical appointment
- being required to attend a recognised religious holiday
- exceptional or urgent family circumstance (e.g. attending a funeral)

Following an absence from school you must ensure that within 7 days you provide your child's school with a verbal or written explanation for the absence. However, if the school has not received an explanation from you within 2 days, the school may contact you to discuss the absence.

Principals may decline to accept an explanation that you have provided if they do not believe the absence is in the best interest of your child. In these circumstances your child's absence would be recorded as unjustified. When this happens the principal will discuss their decision with you and the reasons why.

Principals may request medical certificates or other documentation when frequent or long term absences are explained as being due to illness. Principals may also seek parental permission to speak with medical specialists to obtain information to collaboratively develop a health care plan to support your child. If the request is denied, the principal can record the absences as unjustified.

Travel

Families are encouraged to travel during school holidays. If travel during school term is necessary, discuss this with your child's school principal. An *Application for Extended Leave* may need to be completed. Absences relating to travel will be marked as leave on the roll and therefore contribute to your child's total absences for the year.

In some circumstances students may be eligible to enrol in distance education for travel periods over 50 school days. This should be discussed with your child's school principal.





My child won't go to school. What should I do?

You should contact the principal as soon as possible to discuss the issue and ask for help. Strategies to help improve attendance may include a referral to the school's learning and support team or linking your child with appropriate support networks. The principal may seek further support from the Home School Liaison Program to develop an Attendance Improvement Plan.

What might happen if my child continues to have unacceptable absences?

It is important to understand that the Department of Education and Communities may be required to take further action where children of compulsory school age have recurring numbers of unexplained or unjustified absences from school.

Some of the following actions may be undertaken:

- Compulsory Schooling Conferences

You may be asked, along with your child, to attend a Compulsory Schooling Conference. The conference will help to identify the supports your child may need to have in place so they attend school regularly. The school, parents and agencies will work together to develop an agreed plan (known as Undertakings) to support your child's attendance at school.

- Application to the Children's Court – Compulsory Schooling Order

If your child's attendance at school remains unsatisfactory the Department

may apply to the Children's Court for a *Compulsory Schooling Order*. The Children's Court magistrate may order a Compulsory Schooling Conference to be convened.

- Prosecution in the Local Court

School and Department staff remain committed to working in partnership with you to address the issues which are preventing your child's full participation at school. In circumstances where a breach of compulsory schooling orders occurs further action may be taken against a parent in the Local Court. The result of court action can be the imposition of a community service order or a fine.

What age can my child leave school?

All New South Wales students must complete Year 10 or its equivalent. After Year 10, and up until they reach 17 years of age, there are a range of flexible options for students to complete their schooling.

Working in Partnership

The Department of Education and Communities recognises that working collaboratively with students and their families is the best way to support the regular attendance of students at school.

We look forward to working in partnership with you to support your child to fulfil their life opportunities.

If a student misses as little as 8 days in a school term, by the end of primary school they'll have missed over a year of school.

Further information regarding school attendance can be obtained from the following websites:

Policy, information and brochures:

Please visit the Department of Education's *Policy library*

The school leaving age:

Please visit the Department of Education's *Wellbeing and Learning website*

Do you need an interpreter?

Interpreting services are available on request, including for the hearing impaired. The Telephone Interpreter Service is available 24 hours a day, seven days a week on 131 450. You will not be charged for this service.

For further advice and questions contact your educational services team

T 131 536

Learning and Engagement

Student Engagement & Interagency Partnerships

T 9244 512

www.dec.nsw.gov.au

© February 2015

NSW Department of Education and Communities

www.activetribestudio.com



info@activetribestudio.com
0403 142 902



LET'S WORK TOGETHER TO
BECOME A MORE ACTIVE SOCIETY

STUDIO OPEN NOW

Location: Port Kembla Leagues Club Collegians

ENROL
TODAY

ACTIVE
DANCER
CHEER

Get Up
Zen Out
Tumble
Jazz
Ballet
Hip Hop
Dance Fit
Cheer



SavingChloeSaxby.com

SHELLHARBOUR
TO AUSTINMER
SAT 2ND
MARCH
GREATILLAWARRAWALK.COM

ENTRY \$40 ADULTS

\$20 KIDS

INCLUDES GREAT

ILLAWARRA WALK TEE

100% OF FUNDS RAISED

ARE DONATED TO

SAVING CHLOE SAXBY



ONE AGENCY
Bendigo Bank

SPARTAN
PremiAir Hire

native

MERCURY Bean Based

inmri

HEADLANDS
COMMUNITY



**BUY
TICKETS
ONLINE
NOW!**

**wings over
illawarra**
The Sydney Airshow

4 - 5 MAY 2019

Illawarra Regional Airport, Albion Park
Gates open 9am | See website for details

FEATURING: CLASSIC WARBIRDS – RAAF FIGHTER JETS AND HEAVY LIFT AIRCRAFT – ARMY AND NAVY HELICOPTERS – AEROBATICS BY SOME OF AUSTRALIA'S LEADING PILOTS – HISTORIC FLYING AND STATIC DISPLAYS – HUGE CARNIVAL - FREESTYLE MOTORCROSS - AND MUCH MORE

**ALL INCLUDED
IN THE ONE LOW
ENTRY TICKET
PRICE!!**



wingsoverillawarra.com.au

Strategic Sponsors



**IT'S ON!
IN NSW**

Major Sponsor



AVIATION

**FLY
CORPORATE**



NSW GIRLS GROUP
Established 1944

**NEW SQUADRONS STARTING IN YOUR AREA
RECRUITING NOW**

Get in on the ground floor for...

- **Excitement and Fun**
- **Achievement and Recognition**
- **Friendship and Team Spirit**
- **Plenty of Challenge**

FREE TO JOIN WITH ACTIVE KIDS \$100 VOUCHER



FOR GIRLS AGED 8 TO 18 YEARS

- Free to join with Active Kids \$100 Voucher
- Meet new friends
- Have lots of fun
- Develop your confidence and self esteem
- Train to be a Junior Leader
- Be part of a team
- Takes part in sporting, flying and camping activities
- Get involved in your Community
- Interstate competition trips
- Theory & practical classes in aviation, general interest and life skills
- Recognition for all achievements

ADULTS 18 YEARS & OVER

- All prospective members 3 week trial period at no charge
- Distinctive Leaders uniform
- Join a friendly Parent Support Group
- Full training program to become a Leader (Ladies)
- Become a volunteer Instructor/Supervisor
- Social family events
- Savings plan for camps and excursions
- Regular information updates in newsletters
- Annual Awards Ceremony
- All volunteers are NSW Working with Children Check compliant

If you'd like to learn more, visit an operational Squadron or call us today!



FOR MORE INFORMATION PLEASE CONTACT

Mrs Robyn McKenzie: 0409 391 084 Email: gecco.nsw@girlsleague.com.au
Girls Squadrons also located at Albion Park, Beverly Hills, Blacktown, Bayside, Mudgee, Penrith, Southern Highlands
Facebook: [air new girls](https://www.facebook.com/airnewgirls)

Road safety



40km/h school zones

40km/h school zones slow traffic on the roads around schools. This is to help protect children on their way to and from schools at the times and places where they are often in high numbers. Most 40km/h school zones operate between 8.00am and 9.30am and from 2.30pm until 4.00pm. The 40km/h school zone speed limit must be observed even if school children cannot be seen.

A 40km/h school zone operates on all notified school days including staff development days (student-free days). While some schools may operate on different term dates, school zone speed limits must be followed during NSW Government determined school terms.

You can find the school term dates on the following websites:

- roadsafety.transport.nsw.gov.au
- educationstandards.nsw.edu.au
- education.nsw.gov.au

To increase motorists' awareness of 40km/h school zones, triangular 'dragon's teeth' road markings indicate that the vehicle is entering a school zone.

Fines and a loss of demerit points will apply if the 40km/h speed limit isn't followed. For more information on fines and demerit points, visit rms.nsw.gov.au

For more information on keeping our kids safe around schools visit the parents section on safetytown.com.au

Road safety



Driving safely near school buses

There is a 40km/h speed limit for traffic passing a school bus that is setting down or picking up school children. This speed limit is for all traffic travelling in the same direction as the bus, whether the bus is stationary or moving.

Lights will flash on the front and back of the bus reminding drivers that there may be children crossing or about to cross the road.

Buses can't stop quickly because they are large and heavy vehicles. So, remember:

- Reduce speed to 40km/h when bus lights are flashing
- Give way to buses
- Watch out for children crossing
- Never park in or near a bus stop or bus zone.

Informal school bus stops

Informal bus stops are not sign posted and are usually found in rural areas. They may be at the front of a property, or on the side of the road, which may make children difficult to see.

For more information on keeping our kids safe around schools visit the parents section on safetytown.com.au



Lives lost on NSW roads.



Lives lost on NSW roads.



Road safety

Helping children on and off the bus safely

Your children are most at risk in the minutes after getting off the bus. Here are some ways you can reduce this risk:

- Always meet your child at the bus stop. Never meet them on the opposite side of the road and call them across.
- Wait until the bus has gone, then choose a safe place to cross the road. Remember to Stop! Look! Listen! Think!
- If you cannot meet your child, organise for another trusted adult to take your place.
- Wait at the bus stop and stand at least one step back from the edge of the road.
- Always wait until the bus has gone, then use a safe place to cross.
- Buckle up if the bus has seatbelts.

Model safe pedestrian behaviour. Children learn safe road user habits from you and will continue them later on when they are old enough to travel alone. Until your child is at least eight years old, hold their hand on the footpath, in the carpark and when crossing the road. Up until at least 10 years old, supervise your child very closely, holding their hand when crossing the road.

STOP!
one step back from the kerb

LOOK!
continuously both ways

LISTEN!
for the sounds of approaching traffic

THINK!
whether it is safe to cross and keep checking until safely across

Messages to share with your children in Kindergarten to Year 2

Hold a grown up's hand when:

- you cross the road
- you're on the footpath
- you're in a car park

Messages to share with your children in Years 3 and 4

- Hold an adult's hand when you cross the road
- Use a safe place to cross the road

Messages to share with children in Years 5 and 6

- Stop! Look! Listen! Think! every time you cross the road and keep checking until safely across

Kindergarten to Year 6

- Wait until the bus has gone and then use a safe place to cross

For more information on keeping our kids safe around schools visit the parents section on safetytown.com.au



Lives lost on NSW roads.
Our goal is zero.

