



# Primbee Public School

43 Illowra Cres, Primbee, NSW 2502  
T 4274 1974 F 4276 2837  
E: [primbee-p.school@det.nsw.edu.au](mailto:primbee-p.school@det.nsw.edu.au)  
Relieving Principal: Sharon Rigg



Live Life Well

Respect

Responsibility

Compassion

Personal Best

## WHAT'S ON.....WHEN?

### Term 1 – 2019

Thursday 11 April  
Friday 12 April

ANZAC Ceremony  
Easter Hat Parade  
Big W Voucher Draw  
Uniform Shop open 2.30-3pm  
**Last Day of Term 1**



### Term 2 – 2019

Tuesday 30 April  
Wednesday 1 May  
Thursday 2 May

Students Return  
Woolworths Earn and Learn starts  
School Photos MSP Photography



STUDENTS RETURN  
Tuesday, 30 April

## PRINCIPAL'S MESSAGE 2019

### Welcome to Week 10 – Term 1

This newsletter is packed with wonderful photos of our students accessing rich opportunities.

This week we celebrated our first whole school positive behaviour reward. Our student's each received an ice block and a Burt's Bees lip gloss as they have worked hard to collect buzzies for our hive. Students receive buzzies from teachers in the playground for showing respect, safety and active learning.

We enjoyed a wonderful day for our cross country. A big thank you to all of the parents who attended and assisted in making the day great for our kids. Many thanks to Mrs Hodges for all of her efforts in organising the day.

Today, Mrs Cliff and Miss Cook hosted a workshop for parents. We are so fortunate to have an instructional Leader and passionate teacher who are dedicated to creating positive learning partnerships.

Have a wonderful week everyone.

**Mrs Sharon Rigg**  
Principal

## ANZAC CEREMONY



Our Anzac ceremony will be held on Thursday, April 11 at 10.30am.

Parents are welcome to attend.

## EASTER HAT PARADE



Next Friday 12 April we will be having our Easter hat parade at 2pm. Students are asked to bring in a hat shape and decorations to make Easter Hat with their buddies. Thank you for the donations of Easter Eggs and Easter items that have started to arrive at the office but many more are needed by next Friday.

Big W Voucher will be drawn at the Easter Hat Parade for students have paid for the Book Packs. Payments can be made at the office or online. Good Luck!

## RAFFLE TICKETS

Raffle tickets have also been sent home today and can be returned with all monies to the office "drop box". Easter Egg donations for the raffle can be left at the office and are greatly appreciated. We look forward to seeing you at the parade.

## NRL CLASSROOM MENTOR

We would like to thank Mr Shalom O'ofou from St George Illawarra Dragons who helped out in classrooms and the playground for 2 weeks. Shalom enjoyed hearing stories from the students and had fun joining in playing handball, pass the footy, drumming and he was able to share his own success and experiences with the students.



## CAPTAINS REPORT

On Tuesday we had Cross country. Everyone tried their hardest to win and also have fun. Team mates cheered with encouragement. After the run we had a sausage sizzle which was great.

This week we welcomed our "stingless" native bees to our school grounds. They have a luxurious house which is called a bee hive. We need to remember not to look.....but don't touch..

**By: Isaac & Elijah**

🐝The native bee hive has bee-n purchased by our school with a grant Mrs Rigg applied for through "Ipromise". We look forward to watching their progress.



## SCHOOL PHOTOS

MSP Photography will again be taking our school photos this year. Primbee PS has been booked in for Thursday 2 May (week 1, term 2).

Order forms have been sent home today. PLEASE DO NOT RETURN MONEY ENVELOPES UNTIL PHOTO DAY.

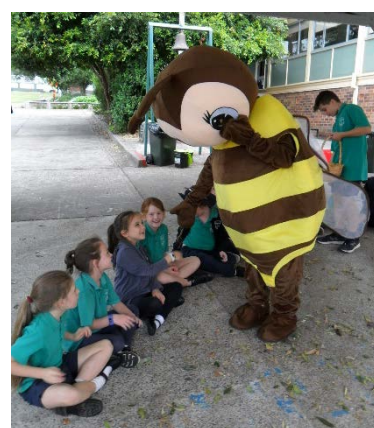
*Sibling envelopes are available from the office.*

## POSITIVE BEHAVIOUR FOR LEARNING

### FOCUS

#### Remember to be considerate of others

Students have been collecting buzzies in the playground and they have already reached their first goal. Students were treated this week to Quelch icy poles, Burts Nees Lip Balm and it was given out by our Primbee Bee who received lots of hugs.





## WOOLWORTHS EARN AND LEARN

Get Ready!!!

Primbee will be collecting stickers again commencing Wednesday, 1 May. Last year we were able to exchange our stickers for some fantastic sports gear.



Primbee will also be placing a box at Warrawong shopping centre.

## NAPLAN ONLINE PRACTICE TEST

Yesterday and today students from year 3 and 5 participated in the NAPLAN online Practice Test.



The NAPLAN tests are designed to help us make sure students are on track with their literacy and numeracy development. Students in Years 3, 5, 7 and 9 participate in NAPLAN tests for reading, writing, conventions of language (spelling, grammar and punctuation) and numeracy.

Students did not need to be computer experts to take the NAPLAN test online and our teachers ensured that students were familiar with the online format. To see the types of questions and interactive features of NAPLAN Online, visit [the public demonstration site](#).

If you have any questions about NAPLAN Online, please contact your child's teacher.

*For more info:*

- [How to support your child during NAPLAN](#)
- [information for parents and carers](#)
- [Watch a video that explains NAPLAN Online](#)
- [Subscribe to ACARA's monthly parent newsletter, Parent Update](#)

## LAKE ILLAWARRA HIGH SCHOOL LEADERSHIP DAY

We learnt that being a leader is not always about being someone's boss but to work as a team in helping each other through problems. To do this we were placed into groups with students from other schools. It was challenging but fun.

**By Igor**

I liked how we got to meet other people from other schools. We did the epic race which consisted of 10 problem solving activities. I thought the marble pipe was hard as you had to connect pipes together as a team to get the marble to the other end without it falling.

**By Wyatt**



## SOUTHERN STARS

I am thrilled to let you know that I have just officially registered Primbee Public School for Southern Stars Dance 2019.



I am excited that we are participating in the dance this year and so happy that we can offer this wonderful opportunity to our students.

I am looking forward to working with the students on this fantastic project. Stay tuned for more information as it comes to hand.

Kind regards  
Mrs Berehowyj

## PRIMARY PRINCIPALS CONFERENCE

Mrs Hodges and Mrs Mayberry took our choir last week to the Novotel North Beach where they were invited to sing at the Primary Principals Conference. Primbee students should be very proud of their performance and professionalism whilst at the event.

We received an email from the Principal of Vacluse Public School – Mrs Maureen Hallahan on behalf of Bondi/Port Jackson combined PPC passing on a fabulous message.

*"I would like to pass on our thanks to your students, and staff for a magnificent performance to open our conference last Thursday morning. The students were delightful. They put their whole heart into performing and they were so well supported by Mrs Hodges and Mrs Mayberry. I had the opportunity to chat to several of the Primbee students and they were impressive. We loved your school song and the local version of the National Anthem.*

*Thank you again for the time and effort you put into a wonderful opening of our time in Wollongong. It was most appreciated by all."*



## LIFE EDUCATION VISIT

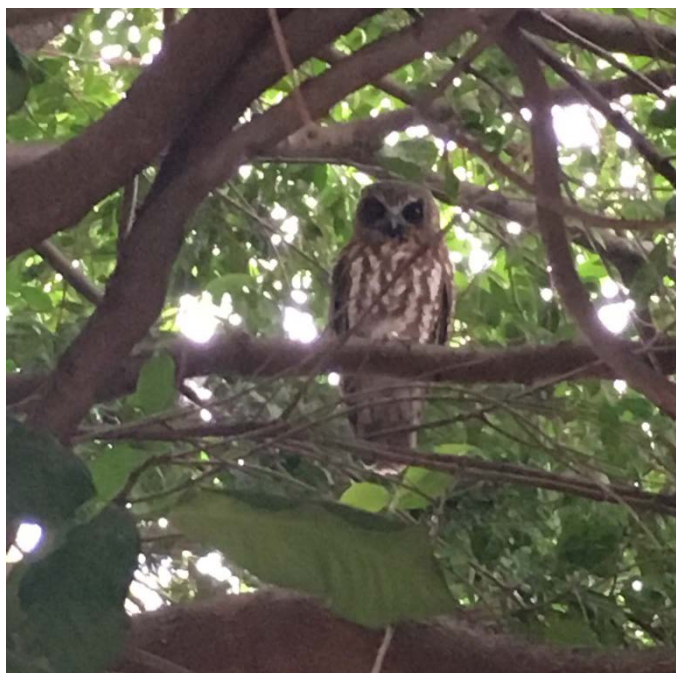
Here are some of our students when Happy Harold visited learning important information on the effects of cyberbullying and how it impacts their lives.

Mrs Berehowyj  
Life Education Co-ordinator





## LOOK WHOOOOOO CAME TO VISIT



Students have been keeping an eye out for our resident owl that sometimes sits in our big Lilly Pilly tree next to the flag pole. The owl has been named by some as Harry Potter's owl – Hedwig.

## UNIFORM SHOP

### CHANGE OF DATES

The uniform shop will now be open on the first Friday of the month and the last Friday of the month between 2.30pm – 3.00pm.



A note will be going home tomorrow to Year 4 children who would like to submit an intention to apply for the Year 5 entry into an opportunity class in 2020

## Thinking of applying for Year 5 entry to an opportunity class in 2020?

**You must apply online at**

<https://education.nsw.gov.au/public-schools/selective-high-schools-and-opportunity-classes/year-5>

### Key dates

**Tuesday 30 April 2019**

Application website opens

**Friday 17 May 2019**

Application website closes at 5.00pm

You must apply by the due date.

**Wednesday 17 July 2019**

Test authority letters sent to applicants

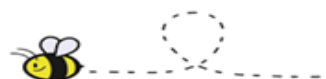
**Wednesday 31 July 2019**

Opportunity Class Placement Test

**Mid-October 2019**

Placement outcome information is sent

**Application information should be read carefully  
before applying.**





# TERM 1 - 2019 PLANNER

Week	Monday	Tuesday	Wednesday	Thursday	Friday
<b>Term 1 - 2019</b>					
<b>1</b>	28/1 Australia Day Public Holiday	29/1 <b>Staff Return</b>	30/1 <b>Students Return</b> Best Start Assessments	31/1 Best Start Assessments	1/2 Best Start Assessments
<b>2</b>	4/2 Kindergarten Start	5/2 School Swimming Carnival	6/2	7/2	8/2
<b>3</b>	11/2 Parent Teacher Information Meeting 4/5Y & 5/6C – 3.10pm	12/2 Parent Teacher Information Meeting 1C – 2.30-3pm 1/2B – 8.20am	13/2 Parent Teacher Information Meeting KB – 2.30-3pm  Lake Illawarra High School EXPO Evening  Dragons Assembly 11.30am – 12pm	14/2 Parent Teacher Information Meeting 2/3D – 3.10pm  3-6 Assembly 2pm	15/2
<b>4</b>	18/2	19/2	20/2	21/2 K-2 Assembly 2pm	22/2 District Swimming Carnival
<b>5</b>	25/2	26/2	27/2 P&C Meeting 6pm	28/2 3-6 Assembly 2pm	1/3 Uniform Shop Open 2.30 – 3pm
<b>6</b>	4/3	5/3 Dental Visit 10am – 3pm	6/3 Dental Visit 10am – 3pm	7/3 K-2 Assembly 2 pm	8/3 Life Education visit
<b>7</b>	11/3 Life Education Visit	12/3	13/3	14/3 3-6 Assembly 2pm	15/3 National Day of Action Against Bullying & Violence
<b>8</b>	18/3	19/3	20/3 SRC Lake Illawarra High School visit AGM 6pm P&C 7pm	21/3 K-2 Assembly 2pm	22/3
<b>9</b>	25/3	26/3	27/3	28/3 3-6 Assembly 2pm StEPS vision screening for Kindergarten	29/3 Uniform Shop 2.30-3pm
<b>10</b>	1/4 Vegetable Week	2/4 Cross Country and BBQ	3/4 Responsible Pet Program NAPLAN on-line Practice Test	4/4 K-2 Assembly 2pm The Big Vege Crunch 10am – 12pm	5/4 Uniform Shop Open 2.30-3.00pm
<b>11</b>	8/4	9/4 Back-up Cross Country	10/4	11/4 ANZAC Ceremony	12/4 Easter Hat Parade Big W Voucher Draw Uniform Shop 2.30-3pm

# NAPLAN Online – information for parents and carers



2019

## Why do students do NAPLAN?

The National Assessment Program – Literacy and Numeracy (NAPLAN) assesses literacy and numeracy skills that are essential for every child to progress through school and life. Students in Years 3, 5, 7 and 9 participate in the annual NAPLAN tests in reading, writing, conventions of language (spelling, grammar and punctuation) and numeracy.

The assessment provides parents and schools with an understanding of how individual students are performing at the time of the tests. NAPLAN is just one aspect of a school's assessment and reporting process - it does not replace ongoing assessments made by teachers about student performance.

NAPLAN also provides schools, education authorities and governments with information about how education programs are working and whether young Australians are meeting important educational outcomes in literacy and numeracy.

## What is assessed?

NAPLAN assesses literacy and numeracy skills that students are learning through their regular school curriculum. All government and non-government education authorities have contributed to the development of NAPLAN materials.

In 2019 most students across Australia will sit NAPLAN online.

Feedback in the first year of NAPLAN Online showed that students engaged well with online assessments. One of the main benefits of NAPLAN Online is tailored (or adaptive) testing, where the test automatically adapts to a student's test performance. The test presents questions of higher or lower complexity, depending on a student's performance.

Tailored (or adaptive) testing is designed to assess a wider range of student abilities and to measure student achievement more precisely. Your child should not be concerned if they find questions more challenging than usual; they may be taking a more complex test pathway. A student's overall NAPLAN score is based on the number and complexity of questions they answer correctly.

NAPLAN Online is not a test of keyboard skills.

There are variations in how fast and well a student can type – just as there are variations in how fast and well a student can write by hand. Year 3 students will complete the writing test on paper.

To get an idea of what the online assessment looks like, visit the public demonstration site at [nap.edu.au](http://nap.edu.au)

## How can I help my child prepare?

Help your child prepare by reassuring them that NAPLAN is just one part of their school program, and by reminding them on the day to simply try their best. Teachers will ensure students are familiar with the types of questions in the tests and will provide appropriate support and guidance. Ensuring students are familiar with using devices, typing on them and navigating through programs are a part of student learning and a requirement of the Australian Curriculum from the first year at school.

ACARA does not recommend excessive preparation for NAPLAN or the use of coaching providers. NAPLAN is about assessing learning progress in literacy and numeracy.

## Will my child sit NAPLAN on paper or online?

In 2019, your child will sit the NAPLAN online tests. However, children in some other schools across Australia will sit the NAPLAN paper tests this year. Federal, state and territory education ministers have agreed that all schools will move online by 2020. State and territory education authorities will determine when their schools move online.

As students are assessed on the same literacy and numeracy curriculum content, regardless of whether they complete the test online or on paper, results for both formats can be reported on the same NAPLAN assessment scale. To find out more about NAPLAN Online, visit [nap.edu.au](http://nap.edu.au)



## Participation in NAPLAN

All students in Years 3, 5, 7 and 9 are expected to participate in the annual NAPLAN assessment.

Students with disability may qualify for adjustments that reflect the support normally provided for classroom assessments. You should first discuss the use of any disability adjustments for your child with your child's teacher.

A formal exemption may be granted for a student with disability that severely limits their capacity to participate in the assessment, or for a student who has recently arrived in Australia and has a non-English speaking background.

Your school principal and your local test administration authority can give you more information on NAPLAN Online disability adjustments or the process required to gain a formal exemption.

## NAPLAN Online 2019 timetable

The assessment window for NAPLAN Online is extended from three days provided for the paper test to nine days. This is to give schools more flexibility in scheduling and accommodate schools that may have fewer devices. The NAPLAN Online assessment window starts on Tuesday 14 May and finishes on Friday 24 May 2019.

The online tests must be taken in the following order:

Test	Duration	Order	Details
Writing	Year 3: 40 min. Year 5: 40 min. Year 7: 40 min. Year 9: 40 min.	To be completed in the first two days	Year 3 students do a paper-based writing test on day one only
Reading	Year 3: 45 min. Year 5: 50 min. Year 7: 65 min. Year 9: 65 min.	To be completed after the writing test	Students read a range of informative, imaginative and persuasive texts
Conventions of language	Year 3: 45 min. Year 5: 45 min. Year 7: 45 min. Year 9: 45 min.	To be completed after the reading test	This test includes spelling, grammar and punctuation
Numeracy	Year 3: 45 min. Year 5: 50 min. Year 7: 65 min. Year 9: 65 min.	To be completed after the conventions of language test	This test includes number and algebra; measurement and geometry; and statistics and probability

## What if my child is absent from school on assessment days?

Where possible, schools may arrange for individual students who are absent at the time of testing to complete missed tests at another time during the school's test schedule. Individual students are not permitted to sit NAPLAN online tests after Friday 24 May 2019.

## How is my child's performance measured?

Individual student performance is shown on a national achievement scale for each assessment. A result at the national minimum standard indicates that the student has demonstrated the basic literacy and numeracy skills needed to participate fully in that year level.

A NAPLAN individual student report will be issued by your child's school later in the year. If you do not receive a report, you should contact your child's school.

## How are NAPLAN results used?

- Students and parents may use individual results to discuss progress with teachers.
- Teachers use results to better identify students who would benefit from greater challenges or extra support.
- Schools use results to identify strengths and areas to improve in teaching programs, and to set goals in literacy and numeracy.
- School systems use results to review programs and support offered to schools.
- The community can see average school NAPLAN results at [myschool.edu.au](https://myschool.edu.au)

## Where can I get more information?

For more information about NAPLAN:

- contact your child's school
- contact your local test administration authority at [nap.edu.au/TAA](https://nap.edu.au/TAA)
- visit [nap.edu.au](https://nap.edu.au)

For information about how personal information for NAPLAN is handled by ACARA, visit [nap.edu.au/naplanprivacy](https://nap.edu.au/naplanprivacy)





**Come & Try**

# FootGolf

**If you have an interest in golf or football (soccer), you will fall in love with FootGolf!**

FootGolf is ideal for all ages and played just like golf, but with a football being kicked over 9 holes. It's loads of fun and is ideal for a casual game, social, school groups, kids parties and team building activities.

- Bookings recommended ph: (02) 4283 5322
- Ages 5+
- Enclosed footwear (strictly no Football boots) and t-shirts essential
- Bring your own ball or book ours

**Cost**

Adult: \$14 • Under 16: \$9.50  
Pre-booked groups (10+): \$750 ea

**Times**

Monday to Thursday, 3-6pm  
Sundays 12 noon - 6pm



A service of  
Wollongong Wollongong City Council  
City of Wollongong

**Pro Shop (02) 4283 5322**

**Club House (02) 4285 1286**

**[www.wollongong.nsw.gov.au/golfcourse](http://www.wollongong.nsw.gov.au/golfcourse)**

**f The Vale Golf Course and Pro Shop**



**BRETT & MICHELLE EDWARDS TENNIS COACHING**

**WARILLA BOWLS & REC CLUB 9.00am -12noon**  
(Jason Ave, Warilla)

**SCHOOL HOLIDAY TENNIS CAMP**

Mon 15th, Tues 16th & Wed 16<sup>th</sup> April 2019  
9:00am -12 noon. All standards welcome.

- Games & prizes
- Ball machine
- Special family rates apply

All enquiries/bookings: Brett & Michelle Edwards  
0403289974 or 0413064298



## Online gaming and your children

[Click here to download the newsletter](#)

**Parent Line NSW** is a government funded telephone and online counselling service for parents and carers across NSW. We provide free professional support to families with children aged 0 to 18 years. Parent Line is open 7 days a week from 9am to 9pm weekdays and 4pm to 9pm weekends.

Parent Line receives thousands of calls from parents and carers who are concerned about their child's online gaming. This newsletter outlines the pros and cons of online gaming and provides tips on how to manage your child's usage.

If you have any questions about how Parent Line can support the families within your school community, please do not hesitate to contact us on [1300 1300 52](tel:1300130052), at [info@parentline.org.au](mailto:info@parentline.org.au) or via our [facebook](#) page.

Regards,  
Nick Ludgate, Senior Manager  
& The Parent Line Team



# SCHOOL HOLIDAY PROGRAM

15-29 APRIL 2019  
Open from 6.30am to 6pm



## MON 15 April

### THE PLAYHOUSE

Lights, camera, action! Come for a fun-filled day for the drama kings and queens of tomorrow. The drama presenters from The Playhouse will teach us the tricks of the trade.

\$15.40 - \$80

## TUES 16 April

### MARINE MADNESS

with Rangers on the Run. Learn about the incredible animals who call the ocean their home. Hold live sea animals, examine specimen samples, and discover a large variety of marine artefacts and shells.

\$13.55 - \$70

## WED 17 April

### MOVIES

Chillax with popcorn and a juice while we watch the latest children's movie. Afterwards we will enjoy hot chips in the park for lunch.

\$15.40 - \$80

## THURS 18 April

### EASTER CELEBRATIONS

We are so eggcited! Hop on in for some eggastic fun, games and creative arts. Oh and an easter egg hunt of course.

\$12.55 - \$65

## CENTRE CLOSED:

Good Friday  
FRI 19 April

Easter Monday  
MON 22 April

## TUES 23 April

### FOIL FANTASTIC

Easter is over and what should we do with all that pretty foil? Bring it in for a day of creativity using fantastic foil! The possibilities are endless.

\$11.55 - \$60

## WED 24 April

### FIT KIDS BOOT CAMP

Celebrate ANZAC Day with an understanding of Army life and join in some crazy kids boot camp fun!

\$12.55 - \$65

## CENTRE CLOSED:

ANZAC Day  
THURS 25 April

## FRI 26 April

### FETE DAY

Roll up roll up for a day of fun and adventure. Putt Putt Golf, jumping castle, carnival games and slushies.

\$15.40 - \$80

## MON 29 April

### BOWLING

Will you bowl a strike? Join us for ten pin bowling fun. Nuggets and chips for lunch.

\$15.40 - \$80

Big Fat Smile **FUNCLUB**

@Balarang  
P: 4257 8075

Visit [bigfatasmile.com.au/funclub](http://bigfatasmile.com.au/funclub) to enrol



## ENROL NOW!

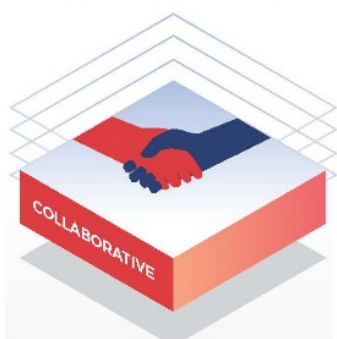
CCS & myGov

Families need to complete a Child Care Subsidy assessment (online at myGov/Centrelink), including confirming the name of your child care provider - otherwise full fees will be charged.

\*Free range indicates the out-of-pocket expenses which vary according to CSS. For your individual fee please contact your fee manager.

# School Community Charter

 **Collaborative. Respectful. Communication.**



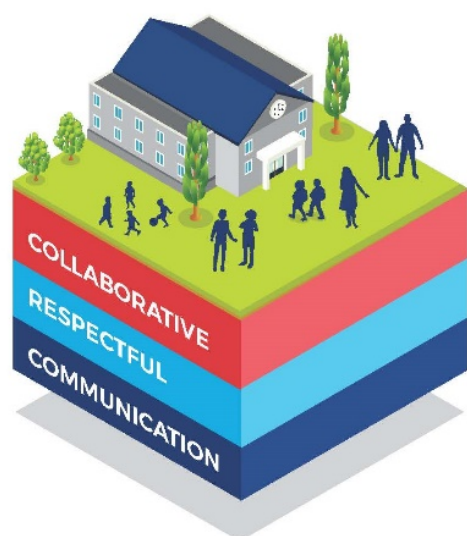
We work in partnership to promote student learning.



We treat each other with respect and fairness.



We communicate in a positive and constructive manner.



## Respectful communication is a right

In all workplaces people have the right to feel safe and respected. Unacceptable and offensive behaviour has no place in our school communities.

### Unacceptable behaviour:

- Aggressive or intimidating actions, such as violence, threatening gestures or physical proximity.
- Aggressive or intimidating language, including the use of obscenities, making sexist, racist or derogatory comments or using a rude tone.
- Treating members of the school community differently due to aspects such as their religion or disability.
- Inappropriate and time wasting communication.

**We all play a part**



# A DANCE SCHOOL WITH A DIFFERENCE



JAZZ  
BALLET  
HIP HOP  
BOYZONE HIP HOP  
TAP  
CONTEMPORARY  
ACROBATICS  
MUSICAL THEATRE  
SINGING  
DRAMA  
CREATIVE TALENT AGENCY

**Woonona & Shellharbour**

enquiries@theprojectbyebonyaustin.com  
www.theprojectbyebonyaustin.com



## SCHOOL HOLIDAY *Football clinics*

APRIL 2019

School Holiday Clinics provide players (aged 5-12 years) and goalkeepers (aged 10-15 years) with the opportunity to be coached by some of our leading coaches.

You will spend the mornings with members of FSC's coaching staff working on your football skills and having a lot of fun!

### WEEK 1 (15 - 18 APRIL)

Thomas Gibson Park (9.00am - 12.00pm)  
Judy Masters Oval (9.00am - 12.00pm)  
Ian McLennan Park \* (9.00am - 12.00pm)  
Terry Reserve (9.00am - 12.00pm)

*\*Includes Goalkeeping Clinic*

### WEEK 2 (23, 24 and 26 APRIL)

Lakelands Oval (9.00am - 1.00pm)  
Rex Jackson Oval (9.00am - 1.00pm)

### FUTSAL CLINIC

Fraternity Club Futsal Courts (9.30am - 11.30am)  
\$70.00

**REGISTRATIONS  
NOW OPEN**

For more information, visit [www.footballsouthcoast.com](http://www.footballsouthcoast.com) or email [office@footballsouthcoast.com](mailto:office@footballsouthcoast.com) or call 42856929

**\$95**  
FROM  
PER PERSON

**HAVE FUN. MAKE FRIENDS. LEARN NEW SKILLS.**

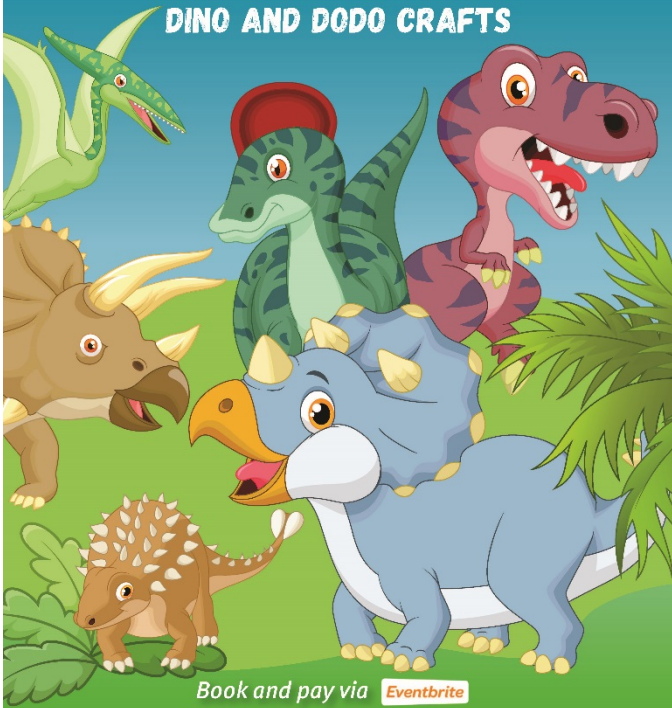


# Wollongong Botanic Garden

## DODOS AND DINOSAURS

SCHOOL HOLIDAY ACTIVITIES  
MONDAY 15 – THURSDAY 18 APRIL  
10AM – 1PM DAILY

THE 'NO MORE DODOS' GARDEN SHOW  
BOTANISAURAS TREASURE HUNT  
DINO AND DODO CRAFTS



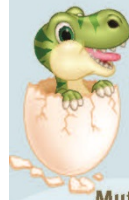
Book and pay via **Eventbrite**  
[wollongongbotanicgarden.eventbrite.com.au](http://wollongongbotanicgarden.eventbrite.com.au)  
Ticket check-in near the playground



Botanic Garden  
WOLLONGONG

Wollongong  
Botanic Garden  
is a service of  
Wollongong  
City Council

wollongong  
city of innovation



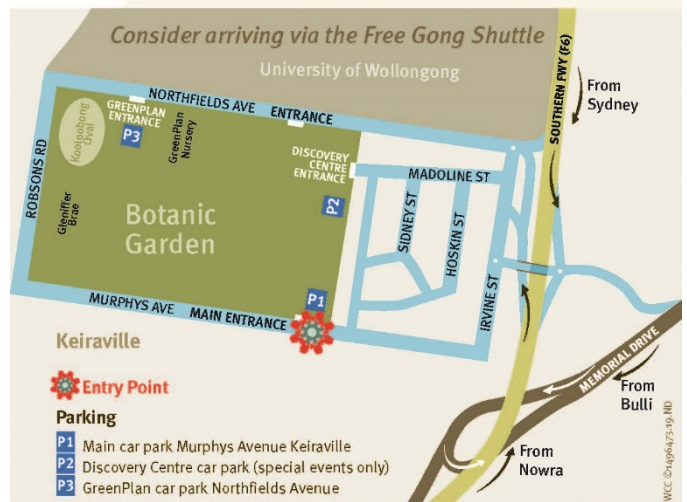
Step back into the land of the ancient dinosaurs this autumn and follow in the footprints of these magnificent giants from the past. You'll discover what they ate while you come face to face with their favourite plants and you will even meet the Muttaborrasaurus, one of our own Aussie dinosaurs. The Dodo Bird will also make an appearance during the holiday activities as well the famous Wollemi Pine. The Garden's holiday program is a great way to have lots fun outdoors, while learning remarkable things about our natural environment.

Activities suitable for children aged 3 to 10 years  
Children must be accompanied by an adult

Cost: \$13 per child  
\$24 for family of two or more children  
No cost for supervising adults

Tickets can be purchased at [wollongongbotanicgarden.eventbrite.com.au](http://wollongongbotanicgarden.eventbrite.com.au) or at the Garden prior to the start of the program. Alternatively you can book at the Garden with card before the activities commence

Sausage sizzles available from the Lion's Club Stall  
Hot and cold drinks available from our on-site coffee van, The Three Flamingos



Wollongong Botanic Garden near the All Abilities Playground

Murphys Avenue entrance, Keiraville  
p 4227 7667 | e [botanicgarden@wollongong.nsw.gov.au](mailto:botanicgarden@wollongong.nsw.gov.au)  
w [wollongong.nsw.gov.au/botanicgarden](http://wollongong.nsw.gov.au/botanicgarden)  
f Wollongong Botanic Garden